



Epworth



Epworth HealthCare

Annual Review 2022-23

Contents

- 1 About us
- 2 Epworth highlights 2022-23
- 4 Hospitals and locations
- 6 President and Group Chief Executive
Year in review
- 11 Year at a glance
- 12 Our strategic plan:
Epworth 2025
- 14 Patient experience
- 16 Research
- 18 Our people
- 19 Our volunteers
- 20 Our Board
- 22 Our Group Executive

About us

Epworth HealthCare is Victoria's largest not-for-profit private hospital group, renowned for excellence in diagnosis, treatment, care and rehabilitation. Founded in 1920, Epworth has been an innovator for more than 100 years, embracing the latest in evidence-based medicine to pioneer treatments and provide excellent, compassionate care for our patients, who remain the focus of everything we do.



Our strategic vision

Delivering another 100 years of exceptional healthcare and innovation to the Victorian community.



Our purpose

Every patient matters.



Our values

Compassion | Accountability | Respect | Excellence.

Epworth HealthCare acknowledges the peoples of the Kulin Nations, the Traditional Custodians of the land upon which we work and care for our patients. We honour the unique and continued spiritual connection that Australian Aboriginal and Torres Strait Islander peoples have to land, waters and culture.

Highlights

Epworth highlights 2022-23



Hospitals and services

Epworth Brighton provides inpatient, outpatient and home-based rehabilitation to support people through a range of health needs including orthopaedic surgery and musculoskeletal injuries, falls and balance concerns, active ageing, cardiac care, pulmonary conditions and neurological disorders including stroke, Multiple Sclerosis (MS) and Parkinson's disease.

Epworth Camberwell is a dedicated rehabilitation and mental health facility which provides support to patients with various health needs, including orthopaedics, neurological conditions and chronic diseases such as arthritis, heart failure and cancer, falls and balance issues and persistent pain. Epworth Clinic is a voluntary mental health service offering psychiatric consulting, inpatient care and therapeutic day programs, as well as a dedicated aged psychiatry unit and neurostimulation services, including electroconvulsive therapy (ECT) and transcranial magnetic therapy (TMS). Epworth Camberwell also houses a specialist sleep studies unit.

Epworth Freemasons operates across three sites in East Melbourne (Albert Street, Victoria Parade and Jolimont Road) and comprises 325 beds. Epworth Freemasons has a 20-chair Day Oncology Unit, advanced education and simulation centre, 20 operating theatres and an eight-bed intensive care unit (ICU). The renovated maternity unit has 34 postnatal suites, nine delivery suites and a 10-bed special care nursery. With radiotherapy and imaging services onsite, including PET-CT scanning, Epworth Freemasons delivers comprehensive cancer care and a first for private hospitals in Victoria, an autologous stem cell transplant service. Additionally, a range of surgical services is available, including robotic-assisted surgery. The hospital has a dedicated Breast Clinic, urodynamics service and Victoria's first private Colposcopy Clinic.

Epworth Eastern, a 231-bed hospital in Melbourne's eastern suburbs, finalised an extensive redevelopment, which includes a 14-storey tower. This transformation introduced numerous healthcare enhancements, such as increased bed capacity, an expanded ICU, advanced clinical facilities, state-of-the-art operating theatres and a cutting-edge hybrid theatre. Additionally, we now offer a dedicated endoscopy suite, an oncology Wellness Zone with a fully equipped gym, new consultation suites and a dedicated General Medical Unit. These spaces are all designed to provide the community with comprehensive and advanced healthcare services. Epworth Eastern provides specialty cardiology and cardiothoracic services, as well as orthopaedic care with expertise in knee, hip and upper and lower limbs, comprehensive oncology services and a nine-chair renal dialysis unit. Vascular, urology and plastic and reconstructive surgery services are also available.

Epworth Geelong is a 253-bed acute hospital featuring a 24/7 Emergency Department, 12-bed ICU, eight-bed coronary care unit, nine operating theatres, two endoscopy suites, catheter laboratory, day oncology unit and renal dialysis unit. Specialties include cardiology, oncology, neurology, neurosurgery, gastroenterology, colorectal surgery, orthopaedics, urology, vascular surgery, and rehabilitation. Epworth Geelong is the only provider of private neurosurgery services in the Geelong region.

Epworth Hawthorn co-locates surgical and rehabilitation services. A boutique surgical centre that specialises in orthopaedics, plastic surgery, urology, oral faciomaxillary, general surgery, vascular, gynaecology and assisted reproductive services with Monash IVF. Epworth Hawthorn also houses the renowned multi-trauma orthopaedic rehabilitation service, supporting people who have sustained traumatic orthopaedic injury, minor brain injuries, amputation, complex wounds and burns following an accident or injury.



Epworth Richmond is a 600+ bed acute medical and surgical hospital. It has an Emergency Department, 26-bed ICU and 31-theatre perioperative department. Specialties include cardiac, neurosciences, orthopaedics, cancer, ear, nose and throat (ENT), general medicine and surgery. Epworth Richmond offers a specialised paediatric ward. Hospital in the Home and Chemotherapy in the Home are available to eligible patients. Epworth Richmond also provides inpatient, outpatient and home-based rehabilitation, with a specialist neurological and brain injury unit, as well as an orthopaedic, neurological and general rehabilitation ward.

Specialist centres

- **Epworth Specialist Centre Lilydale** provides a range of medical, radiology, surgical and allied health services, before and after surgery.
- **Epworth Transitional Living Centre (TLC)** is a residential property in Thornbury that provides a home and community environment for people to adjust to life after traumatic brain injury, relearning everyday skills while preparing for independent living.



<https://www.epworth.org.au/our-services>

President and Group Chief Executive

Year in review



It is our pleasure to introduce the 2023 Annual Review of operations at Epworth HealthCare.

On behalf of the leadership group and Board, we would like to take this opportunity to thank all Epworth staff, doctors, donors and volunteers for their dedication and expertise. Your ongoing commitment to this wonderful organisation is greatly appreciated.

Over the past year, Epworth has continued to provide treatment to over 200,000 Victorians and others who have travelled to receive the care we provide.

As we have emerged from the impact of the pandemic, we continue to see an increase in activity levels across all our hospitals.

In the 2022-23 year, we provided:

- over 227,000 patient admissions, an 11.5% increase on the prior year
- more than 143,000 surgical procedures (a 13% increase)
- more than 81,900 same day procedures, (a 16% increase).

In addition, over 47,000 people attended our Emergency Departments at Epworth Richmond and Epworth Geelong, a 1% increase overall on the prior year but a significant 43% increase in the number of children with 6,400 children attending. Importantly we also welcomed 2,935 babies into the world.

The 2022-23 year was also a period of leadership transition with the departure of Dr Lachlan Henderson after five years as Group Chief Executive and the commencement of Professor Andrew Stripp. Since joining the organisation, Professor Stripp has focused on understanding the many strengths and opportunities of Epworth and he has observed the continued importance of excellence in patient care and supporting the extraordinary people involved in making that happen.

The year has witnessed many successes including the Australian Private Hospitals Association (APHA) 2023 Award for Excellence and being a finalist in the APHA awards in the Clinical Excellence: Quality of care and patient outcomes category. There were many clinical practice achievements including the 1,000th TAVI (Transcatheter Aortic Valve Implantation) for people requiring a replacement of their aortic valve.



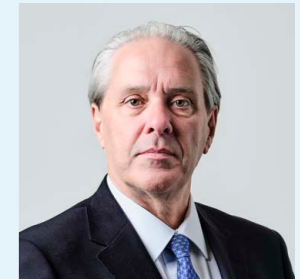
We also celebrated the contribution of our nurses and midwives, acknowledging excellence in clinical practice, educational practice, leadership, person-centred care, quality improvement and research practice. The recipient of the Susan Harris Medal for Excellence, an overall award for excellence in nursing or midwifery, was awarded to Pranitha Govender, Associate Director Clinical Services, Epworth Eastern. Through the generosity of our donors, we launched the Brookes Academy, Nursing and Midwifery at Epworth in May, which is dedicated to advancing the professions of nursing and midwifery in Australia, ensuring Epworth nurses and midwives can progress their careers. Our mission is to establish a place where our nurses and midwives can discover, learn and grow.

With the support of our many donors and the Epworth Medical Foundation, we continue to invest in the improvement of our people and our facilities. During the year we awarded scholarships to our people to a total value of \$1.14m for professional development and a further \$1.1m for research and innovation initiatives.

2023-24 will be another exciting year for our organisation, with continued growth in activity led by a new leadership team and the continued extraordinary support of our donor community. As the largest private hospital group in Victoria, our priority is to provide the most advanced and safe treatment options to the people of Victoria.



Wendy Thorpe
President, Board



Professor Andrew Stripp
Group Chief Executive



Our new hybrid theatre at Epworth Eastern.



Our nurses and midwives will continue learning and developing through the Brookes Academy.



Year at a glance

Emergency Department care (Epworth Richmond and Epworth Geelong)

Year	Emergency presentations
2022-23	47,061
2021-22	46,649
2020-21	43,846

↑ 1% increase in Emergency presentations compared with last year.

Patient admissions across all Epworth hospitals

Year	Total patient admissions
2022-23	227,136
2021-22	203,638
2020-21	199,074

↑ 11.5% increase in patients admitted in the last year.

Children treated

Year	Total children admitted
2022-23	6,435
2021-22	4,490
2020-21	4,155
2019-20	4,552

↑ 43% increase in number of children treated in the last year.

Surgical procedures undertaken

Year	Procedures undertaken
2022-23	143,442
2021-22	125,923
2020-21	122,308
2019-20	116,691

↑ 13% increase in procedures undertaken in the last year.

Same-day procedures

Year	Same-day procedures
2022-23	81,934
2021-22	70,529
2020-21	68,215
2019-20	61,404

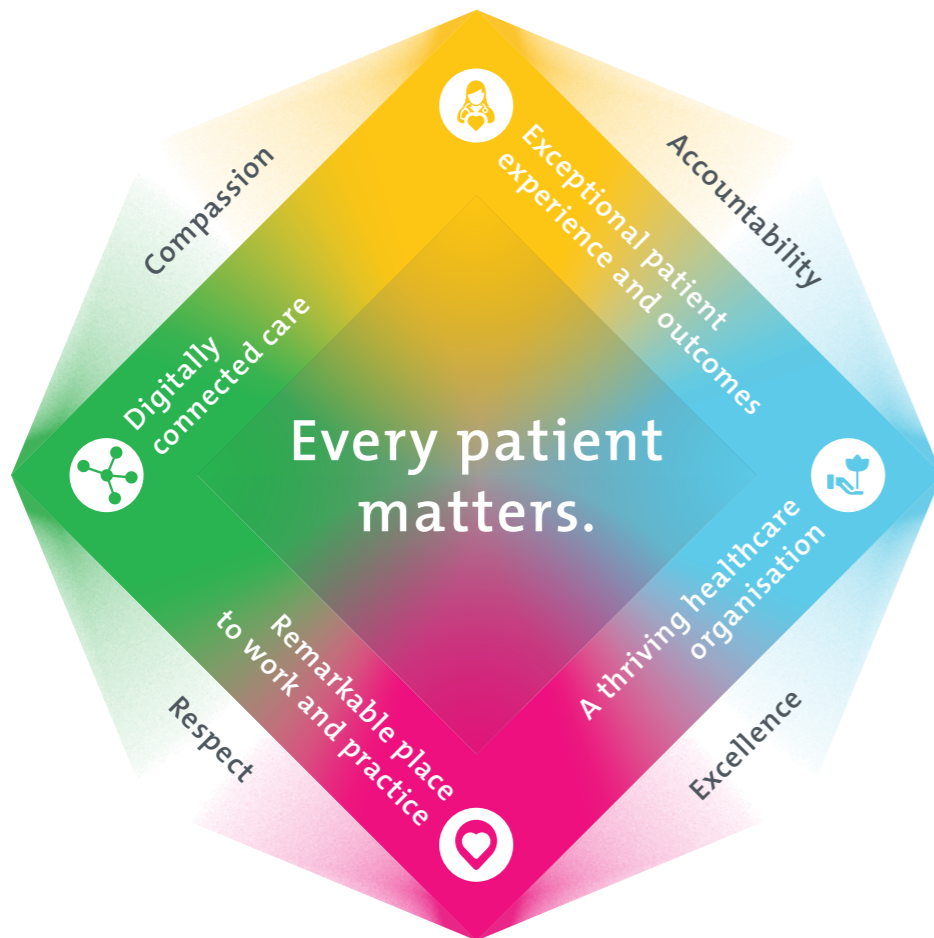
↑ 16% increase of same-day procedures in the last year.

Our strategic plan:

Epworth 2025

Epworth has continued its focus on delivering another 100 years of exceptional healthcare and innovation to the Victorian community through the implementation of our Epworth 2025 strategy.

Our strategic focus for 2022-23 has been the development of new models of care, expanded clinical services, delivery of innovative research and continued investment in our workforce and facilities.



Key achievements for each strategic priority have included:

1 Exceptional patient experience and outcomes

- Launch of the 2025 Clinical Services Plan to deliver services which meet the future needs of our patients and communities
- Growth of the research program to include over 360 studies in progress, including the world first ADAM trial of a male contraceptive implant
- Being the first Victorian private hospital to run an autologous stem cell transplant service (from cell retrieval to transplantation)
- Increasing our patient accommodation support by opening a further three apartments at Epworth Richmond, one at Epworth Eastern and one at Epworth Geelong, provided thanks to our generous donors.

2 Thriving healthcare organisation

- Expansion of our in-home services to include Chemotherapy in the Home and registration as a Rehabilitation at Home provider for the Transport Accident Commission
- Completion of Epworth Eastern tower redevelopment, including a new Intensive Care Unit and electrophysiology service
- Growth of our public partnerships to support elective surgery waitlist reduction post the pandemic
- Expansion of our successful Australian-hospital first treatment of food scraps to produce green electricity for the grid to Epworth Geelong
- Redevelopment of the haematology and oncology ward at Epworth Freemasons.

3 Remarkable place to work and practice

- Launch of the Brookes Academy, Nursing and Midwifery at Epworth, a place where nurses and midwives can discover, learn and grow their careers
- The inaugural Epworth Nursing and Midwifery awards event, with over 400 staff in attendance to recognise and celebrate the work of our nurses and midwives
- Expansion of the Epworth graduate support program to include 283 new nursing graduates.

4 Digitally connected care

- Expansion of the Epworth Patient Portal to include informed financial consents, online payments, anaesthetic risk assessments and digitised claims forms. More than 82,000 patient admissions were processed through the portal in 2022-23 and 77% of patients using the portal had indicated they had a good or very good digital experience
- Successful upgrades of critical systems to improve staff experience including payroll, recruitment, and onboarding
- Launch of the Doctor app which provides Epworth doctors the ability to access patient details, view theatre booking details, make calls directly to ward nurse-in-charge, patient or patient's next of kin and digitally process certificates and queries. More than 400 doctors use this app.

Next year, our strategic focus will be on investing in our workforce and embedding process and system improvements to ensure Epworth continues to deliver exceptional patient care and strong operational performance.

Patient experience

Feedback is an important way we can ensure Epworth patients receive a positive experience and it also helps identify ways we can improve.

We regularly survey our patients who have had an overnight admission about their hospital stay, using a survey that includes the Australian Hospital Patient Experience Question Set. In the last financial year, 39,985 surveys were sent to our patients, with a 50% response rate. Of the 19,180 who replied:

➔ **82%** of respondents rated the quality of the treatment and care they received as 'very good.'

The modified Net Promoter Score, which indicates whether a patient would recommend Epworth to their friends and family, was **77**, a strong and positive response.



Research

For over 100 years, Epworth has made significant contributions to research and innovation in clinical care, with this success underpinned by strong research governance and an emphasis on patient safety.

Research, including clinical trials, is crucial to improving patient outcomes by identifying new treatment options and pathways for our patients and the wider community. Our talented research teams of 461 credentialed researchers, includes 162 principal investigators and 37 research nurses and coordinators. Research at Epworth has continued to grow across all sites.

At 30 June 2023, Epworth had in progress:

- **360** research studies (compared to 327 in 2021-22) including
 - **225** investigator-initiated studies
 - **69** commercially-sponsored studies
 - **66** collaborative group studies.

Research is conducted across a vast range of specialties, with current active studies including:

➤ cancer services	101
➤ rehabilitation, mental health and chronic pain	41
➤ general surgery and gastroenterology	37
➤ critical care	18
➤ UroRenal and vascular	24
➤ musculoskeletal	26
➤ women's and children's health	32
➤ internal medicine	18
➤ cardiac sciences	16
➤ Centre for Clinical Nursing Research	14



Sherryn Bowker, Dr Costas Yannakoum and Nicole Brooks from Epworth Centre for Immunotherapies & Snowdome Laboratories.

Miri and Moshe Meydan Family Epworth Research Hub

In late 2022, the Miri and Moshe Meydan Family Epworth Research Hub was established at Epworth Richmond. The extensively renovated ground floor space is purpose built, facilitating research and enabling closer collaboration across teams. The Research Hub houses the Research Development & Governance Unit and various research teams, including Epworth Clinical Trials (cardiology, critical care, midwifery, and pelvic floor clinical trials and research), Jreissati Pancreatic Centre, Julia Argyrou Endometriosis Centre at Epworth, Medical Oncology, Monash Epworth Rehabilitation Research Centre (MERRC), Nursing Research and Clinical Trials and Epworth Monash Rehabilitation Medicine (EMReM).

Centres of Excellence

Epworth has established several centres of excellence that aim to give patients dedicated care in the areas of pancreatic cancer, endometriosis, blood cancers and prostate cancer.

Jreissati Pancreatic Centre (JPC) at Epworth

JPC has 28 active research studies in total, with 16 open and 12 in development, as at 30 June 2023.

In April 2023, JPC assumed operational responsibility for the Australian Pancreatic Cancer Screening Program, which screens people who have a higher chance of developing pancreatic cancer due to their genetics.

JPC is also developing a national data registry and management tool to improve patient care. This registry will provide clear guidelines to standardise the management and monitoring of pre-cancerous lesions to hopefully prevent pancreatic cancers from developing.

Julia Argyrou Endometriosis Centre at Epworth (JAECE)

With the rate of hospitalisations for endometriosis doubling among 20-24 year olds in the past decade, our team is focused on research to develop better treatments and care.

Currently, JAECE has 18 active research projects underway, with another seven in development. Its biobank project commenced recruitment this year and six papers have been published.

Research currently underway includes the exploration of repurposing PET imaging for the diagnosis and surveillance of endometriosis and examining obstetric outcomes in patients with pre-pregnancy endometriosis.

Epworth Centre for Immunotherapies and Snowdome Laboratories (ECISL)

In February 2023, Epworth commenced an autologous stem cell transplant service at Epworth Freemasons, becoming the first private service in Victoria, and the second only in Australia to do so. By 30 June 2023, nine patients had received a stem cell transplant at Epworth.

The biobank project continues, with almost 10,000 biospecimens now collected for this study, which provides our researchers with a vast amount of data for research.

New studies into translational research for cellular therapies are in development. This includes analysing when T cells (immune cells) are at their 'fittest' to help understand the best time to collect from patients to make CAR T-cell therapy as effective as possible.

This year, haematology clinical trial highlights include the successful development of capacity to launch CAR-T cell clinical trials in 2024.



Our people

8,036 employees

This includes:

4,545 nurses and midwives
(57% of our workforce)

744 allied health employees

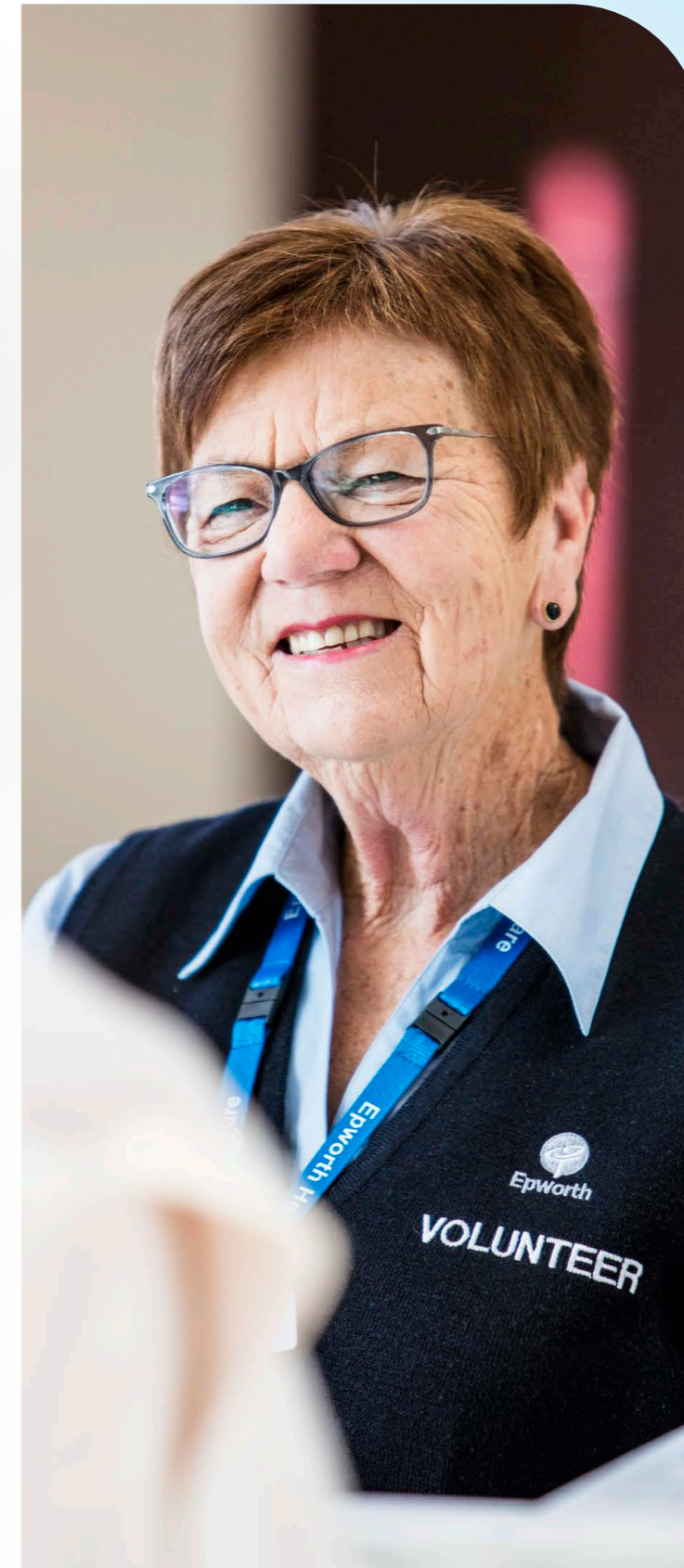
387 directly employed doctors

Our patients are also cared for by:

2,967 Visiting Medical Officers (VMOs)

1,027 surgical assistants

252 Junior Medical Officers (JMOs)



Our volunteers

Hospital volunteers:

72 Epworth Richmond

44 Epworth Geelong

34 Epworth Eastern

19 Epworth Freemasons

4 Epworth Rehabilitation

40 Auxiliary volunteers

47 Consumer advisors

260 Total

Our Board

Epworth Foundation is a body corporate established under the Epworth Foundation Act 1980 (Vic) that principally operates under the registered business name Epworth HealthCare. Our Board of Management consists of 11 members.



Ms Wendy Thorpe

President, BA, BBus, Grad Dip Applied Finance & Investment, GAICD, FFin, Harvard AMP172

Appointed to the Epworth Board in 2018, Ms Thorpe was elected President in November 2021. Ms Thorpe is also Chair of Online Education Services, a Non-Executive Director of IAG, Heritage and People's Choice Bank, Data Action and auDA, and a member of Chief Executive Women. She previously served as a Director of Ausgrid, Tower, AMP Bank and Very Special Kids, and was a member of Council at Swinburne University. Ms Thorpe had an extensive executive career leading technology and operations within large, listed financial services companies. This included senior executive roles at AXA (CIO and COO), ANZ (General Manager, Institutional Technology) and AMP (Group Executive, Operations).



Dr Alex Cockram

Deputy President MBBS, MMed (Psych), FRANZCP, GAICD

Appointed to the Epworth Board in 2020, Dr Cockram is an experienced Board Director in health, home and aged care, academic institutes and large scale precinct infrastructure development and management. Dr Cockram served as a Commissioner to the Royal Commission into Victoria's Mental Health System and has undertaken key roles as a strategic advisor to government and industry on areas including mental health, alcohol and other drug services, and service system reform. Dr Cockram is currently on the Boards of Silver Chain Group and New Footscray Hospital, Plenary Health and was formerly Chief Executive of Western Health.



Associate Professor Nerina Harley

AM MBBS, MD, FRACP, FJFIM, FCICM, PGDipEcho, AFRACMA

Associate Professor Harley is the Chair of the Group Medical Advisory Council (GMAC) and the Specialist Accreditation Committee at Epworth. She is Chair of the Epworth Intensive Care Council, founding Chair of the Critical Care Clinical Institute and Director of Epworth ICUs at Epworth Freemasons and Epworth Geelong with extensive experience in clinical intensive care, leadership, clinical governance and organisational culture. A/Prof Harley works with the state and federal Departments of Health on several committees including immediate past Co-Chair of the Critical Care Clinical Network, Safer Care Victoria and a member of its COVID-19 Expert Working Group. Internationally she is a consultant with the World Health Organisation (WHO).



Dr Peter Lowthian

MB BS (Hons), FRACP, FAFRM, FRCP, FRACMA

Appointed to the Board in 2020, Dr Lowthian has extensive experience in clinical governance and patient safety, medical leadership and engagement, organisational leadership and culture, research governance and medical education. He previously served as Group Director Medical Services and Clinical Governance at Cabrini Health and was the Censor in Chief of the Royal Australasian College of Medical Administrators until January 2023. Dr Lowthian is a Board Member of the Australasian Cardiac and Thoracic Surgery Research Institution Ltd.



Ms Ingrid Player

BEc, LLB (Hons), GAICD

Appointed to the Epworth Board in November 2021, Ms Player has more than 20 years' experience in the healthcare industry, gained from leadership roles across the private, public and not for profit sectors. In her executive career, Ms Player was Group Executive – Legal, Governance and Sustainability at Healthscope, one of Australia's largest private healthcare providers. As a qualified lawyer, she previously worked in private legal practice in Australia and Europe specialising in corporate law, M&A and capital markets. Ms Player currently serves as a Non-Executive Director of Cleanaway Waste Management Limited (ASX: CWY), Cogstate Limited (ASX: CGS), Epworth Foundation and HealthShare Victoria.



Mr Assaf Ambar

BA, BBus

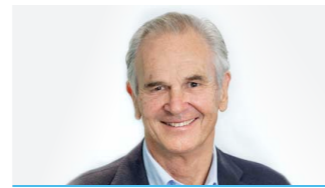
Mr Ambar was appointed to the Epworth Board in November 2022, after serving as a Board observer for two years. Mr Ambar brings extensive strategy, commercial, technology and operational excellence experience to the Board, having spent eight years with Strategy Consulting firms McKinsey & Company and Boston Consulting Group, both in Australia and overseas, along with commercial and operational roles in tech companies, including Google.



Mr James Flintoft

LLB, BSc, M.B.A (Wharton), FAICD

Appointed to the Epworth Board in November 2021, Mr Flintoft is an experienced Non-Executive Director with extensive private and public sector experience, including strategy consulting with McKinsey & Co; commercial banking with ANZ; and policy and service delivery with Government (Department of Prime Ministers & Cabinet, Regional Development Victoria). Mr Flintoft is currently on the Boards of Transport Accident Commission, Development Victoria, Predictive Hire, Foundation for Rural & Regional Australia, Social Traders and Foundation House and the Working Group of Commonwealth Agriculture Workforce.



Dr Michael Georgeff

BSc, BE, PhD (London University), DIC

Dr Georgeff has extensive experience in digital health care and artificial intelligence. He is Executive Chairman of Sicura Health Pty Ltd, Fellow of the American Association for Artificial Intelligence, Fellow of the Australian Computer Society and member of Australasian Institute of Digital Health. He is also a Club Melbourne ambassador and sits on the Executive Committee, International Joint Conference on Artificial Intelligence. He was formerly founder and CEO of Precedence Health Care Pty Ltd, and Professor, Faculty of Medicine, Nursing and Health Sciences at Monash University.



Ms Michelle Somerville

BBus (Accounting), FCA, FAICD, Master Applied Finance

Ms Somerville was appointed to the Board in October 2021 and is an experienced Non-Executive Director, bringing deep and relevant finance, risk and governance experience to the Board, having worked in the financial services industry in both her executive and non-executive roles. Previously she was an audit partner with KPMG Australia for nearly 14 years, with a focus on the financial services industry in both Australia and overseas. In addition to the Epworth Board, she serves on the Boards of IOOF Holdings Limited, OnePath Funds Management, Summer Foundation and Select Harvests Limited.



Professor Andrew Stripp

Epworth HealthCare Group Chief Executive

Epworth HealthCare Group Chief Executive Professor Andrew Stripp joined the organisation in July 2023. He brings extensive health leadership experience gained over 30 years. Throughout his career, Andrew has led the delivery of high-quality and safe health services, while advancing excellence in academic research and clinical education. As well as working at Monash Health as Chief Executive, he was the Deputy Chief Executive and Chief Operating Officer at Alfred Health. Andrew has also worked in various government departments and consulted to hospitals and health care systems nationally and internationally.



Reverend Sue Withers

DipTeach, BTh, GradDipPsych Grad Dip Professional Psychology, GAICD

An ordained minister of the Uniting Church of Australia, Rev. Withers completed her Masters in Professional Psychology at Monash University in 2022. Rev. Withers is a past Moderator (2003-2006) and has had management and pastoral leadership roles associated with the Synod (Victoria and Tasmania) in the Uniting Church of Australia. She was Senior Chaplain at Methodist Ladies College from 1997-2003 following a career in secondary teaching.

Our Group Executive

Epworth HealthCare is led by a Group Executive team of eight, who bring a wealth of experience and expertise to our organisation.



Professor Andrew Stripp
Group Chief Executive
Epworth HealthCare

Group Chief Executive Professor Andrew Stripp brings extensive health leadership experience gained over 30 years. Commencing his career as a Clinical Psychologist, Andrew was most recently the Chief Executive at Monash Health, Victoria's largest and most comprehensive health service comprising nine hospitals and 46 community-based sites. Prior to joining Monash Health, Andrew was the Deputy Chief Executive and Chief Operating Officer at Alfred Health.



Ms Karen Lowe
Chief People Officer (Interim)

Karen has a broad range of experience across many industries. She has developed her passion for people through a variety of roles including shared services, finance, human resources and general management roles. Prior to joining Monash Health in 2016, Karen's most recent role was Executive Director People and Culture and Pathology Monash Health. Ms Carolyn Terry was our Chief People Officer from November 2022 to October 2023.



Mr Matt Malone
Chief Information Officer

With over 20 years senior technology leadership experience across private, public and not-for-profit sectors, Matt was appointed to the position of Chief Information Officer in February 2023.

Matt is responsible for the technology and digital strategy, cyber security and privacy and the development, implementation and support of the information systems, functions and technology infrastructure.



Dr Vivek Nigam
Chief Medical Officer (Interim)
and Executive Director Academic
and Medical Services

Vivek's portfolio includes medical leadership, clinical governance, research, innovation and professional lead for all doctors at Epworth. Vivek, who has been with Epworth for four years, is an experienced executive medical leader and has previously held similar positions of Executive Director Medical Services and Clinical Governance for Illawarra Shoalhaven Local Health District and Group Director of Medical Services at Central Coast Local Health District.



Mr Scott Bulger
Executive Director, Epworth
Medical Foundation and Brand

With extensive senior leadership experience in development, advancement, marketing and media across the private and not-for-profit (NFP) sectors, Scott joined Epworth in 2012. Prior to Epworth, Scott was Pro-Vice-Chancellor, Development and External Relations, at Bond University.



**Adjunct Professor
Kate Gillan**
Executive Director, Clinical
Services and Chief Nursing Officer

Kate has extensive experience in healthcare leadership in public, private and NFP sectors across all specialties, including acute, aged care, community and primary care. Prior to joining Epworth in May 2021, Kate was Chief Nursing and Midwifery Officer at Barwon Health and is an Adjunct Professor at Deakin School of Nursing.



Mrs Jenny Patton
Chief of Strategy
and Performance

Across private and government sectors, Jenny has over 25 years' experience in healthcare in operations, strategy, business development and governance. Clinically trained, with deep foundations in healthcare, she most recently was the Chief Commercial Officer at Healthscope. Prior to Healthscope, Jenny held executive roles at the Australian Digital Health Agency, Healthcare Australia and Medibank Private.



Ms Natasha Toohey
Chief Operating Officer, Hospitals

Natasha joined Epworth in February 2022. She was formerly Executive Director of Operations at Western Health. In this role, her multi-site operational remit encompassed major capital, commercial and clinical projects, including commissioning the Joan Kirner Women's and Children's Hospital, introduction of a multi-campus electronic medical record, redevelopment of the Sunshine Hospital Emergency Department and leadership of Western Health's pandemic response.



Mr Alex Young
Executive Director Finance
and Chief Financial Officer

Alex has over 20 years' experience in finance leadership roles in both Australia and the UK, across a broad range of industries including media and digital, consumer goods, supply chain and manufacturing. Alex was previously the Finance Director for News Corp Australia publishing, and more recently has been consulting across different sectors, including healthcare.

Epworth HealthCare

89 Bridge Rd
Richmond VIC 3121
Phone 03 9426 6666

Epworth Brighton

85 Wilson Street
Brighton VIC 3186
Phone 03 9591 9200

Epworth Camberwell

888 Toorak Road
Camberwell VIC 3124
Phone 03 9809 2444

Epworth Eastern

1 Arnold Street
Box Hill VIC 3128
Phone 03 8807 7100

Epworth Freemasons

109 Albert Street
East Melbourne VIC 3002
Phone 03 9483 3833

320 Victoria Parade
East Melbourne VIC 3002
Phone 03 9418 8188

120 Jolimont Road
East Melbourne VIC 3002
Phone 03 9132 9600

Epworth Geelong

1 Epworth Place
Waurin Ponds VIC 3216
Phone 03 5271 7777

Epworth Hawthorn

50 Burwood Road
Hawthorn VIC 3122
Phone 03 9415 5777

Epworth Richmond

89 Bridge Road
Richmond VIC 3121
Phone 03 9426 6666

**Epworth Specialist
Centre Lilydale**

Suite 4, 355 Main Street
Lilydale VIC 3140
Phone 03 8807 7933



