



What is skin cancer?

Skin cancer occurs when damaged cells grow in an uncontrolled way and form tumours. These tumours may or may not spread to other parts of the body.

Types of skin cancer

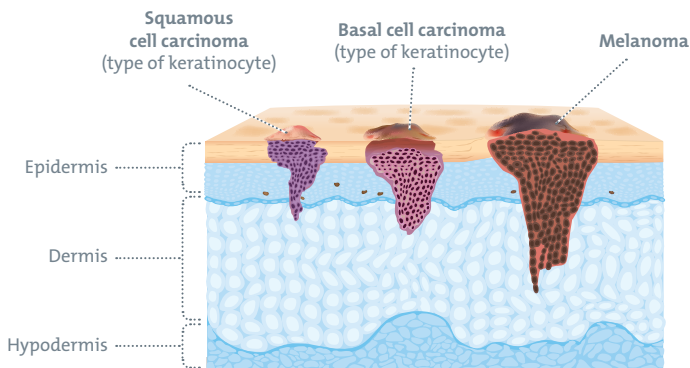
There are two types of skin cancer.

Melanoma

Melanoma occurs when the pigment-producing cells that give colour to the skin become cancerous.

Keratinocyte

Keratinocyte cancers, also known as non-melanoma skin cancers, are the most common type of skin cancer in Australia and less dangerous than melanoma skin cancer.



Signs and symptoms

It's natural for your skin to change as you age or throughout different weather and seasons. For peace of mind, we encourage you to recognise what is normal for your body and consult your GP if changes are persistent.

Symptoms of skin cancer can include:

- > a thickened red and scaly spot on the skin
- > a rapidly growing lump that may be tender to touch
- > a change in colour, size, or shape of a mole
- > a mole that begins to itch or bleed
- > any crusty, non-healing sores.

Common tests used to diagnose skin cancer

To investigate your health concerns, your specialist or doctor may schedule one or several of the following skin cancer tests.

Magnifying tools

Depending on symptoms, your doctor may inspect your moles or skin using a hand-held magnifying tool.

Biopsy

Your doctor may request you to undergo a biopsy after they inspect your skin with a magnifying tool. A biopsy is the removal of a small piece of tissue that will be examined under a microscope.

Treatment options

Your Epworth specialist will discuss the treatment options with you and consider your circumstances and your preferences. An overview of common skin cancer treatments:

Surgery

Surgery is the main form of treatment for skin cancer and in some cases can completely cure your cancer. Depending on your type of skin cancer and stage, your care team may recommend surgery where the mole and a section of the surrounding skin is removed.

Radiotherapy

Radiotherapy is the use of radiation to treat and manage cancer and may be used with other forms of treatment. Radiotherapy at Epworth is supported by the latest world-class technology and evidence-based techniques.

Immunotherapy and targeted therapy

Immunotherapy and targeted therapy may be recommended for some types of skin cancer.

Immunotherapy improves your immune system's ability to fight cancer cells.

Targeted therapy involves drugs that target features of cancer cells to stop them growing.

Your doctors and treating team

Your team throughout your skin cancer journey generally starts with your GP, and may involve other specialists such as dermatologists, plastic surgeons and oncologists.

Your care team is here to provide you with comprehensive treatment, access to talented, caring specialists and support for you, and your family, during this challenging time.

Why choose Epworth for cancer care?

No one wants to experience cancer. *Our goal is to support you.*

You can expect a trusted specialist who will listen to your concerns and discuss the latest treatment options available for you to choose from.

You will receive care in comfortable, nurturing spaces where your loved ones can be a part of your journey.

Your own team of experts – doctors, nurses and allied health professionals – will focus on your wellbeing. **Ask your GP for a referral to Epworth.**

The skin cancer pathway at Epworth

Information to help you feel prepared for your next steps.

> Symptoms

If you have noticed a change to your skin or general health, book a consultation with your GP as soon as possible.

> Diagnosis

Epworth provides patients with access to several thorough diagnostic tests to further investigate signs of skin cancer.

> Treatment

Epworth specialists are here to help you understand your treatment options so you can make an informed choice of treatment.

> Rehabilitation

Holistic rehabilitation programs are available before, after or during treatment, tailored to your individual needs.

> After treatment

If you are in remission for skin cancer, you may need follow-up appointments with your care team.

Choose your Epworth skin cancer specialist



Click
or scan the
QR code



- > Surgical oncologists
- > Dermatology service
- > Radiation oncology service
- > Plastic and reconstructive surgery service

Epworth locations for cancer care

We are Victoria's largest not-for-profit private hospital group, renowned for excellence in diagnosis, treatment, care and rehabilitation. You will find specialist wards, imaging, pathology, and more, all onsite.

Get access to:

- > Your choice of specialist and location.
- > Timely screening, investigation and diagnosis.
- > Treatment (including surgery, chemotherapy, radiation therapy, targeted treatment and clinical trials).
- > Modern inpatient and day oncology facilities.
- > Multidisciplinary care with experts across specialties.

Epworth Eastern

1 Arnold Street
Box Hill VIC 3128
Phone 03 8807 7100

Epworth Freemasons

109 Albert Street
East Melbourne VIC 3002
Phone 03 9483 3833

Epworth Geelong

1 Epworth Place
Waurm Ponds VIC 3216
Phone 03 5271 7777

Epworth Richmond

89 Bridge Road
Richmond VIC 3121
Phone 03 9426 666

To become an Epworth patient, ask your GP for a referral to an Epworth specialist.



For more information about skin cancer visit epworth.org.au/oncology