

2027 Scholarships Applicant Guidelines



Applications open Mon 18 May 2026 | Applications close Fri 19 June 2026

Scholarships are made possible with thanks to donors and sponsors of the Epworth Medical Foundation

Scholarship Overview

The Epworth Scholarship Program provides a unique opportunity for Epworth HealthCare to support your professional development. The program is the largest of its kind in the healthcare industry in Australia. All Epworth employees who meet the eligibility criteria are encouraged to apply.

These Scholarships provide all contracted Epworth HealthCare staff with a broad range of activities, projects, opportunities, initiatives, and support to assist you to be the best you can.

- attend a conference, seminar or workshop
- training support such as a certificate or one on one training
- visit another hospital, organisation or centre of excellence to research models of care
- undertake an innovation project
- return to study
- participate in the MBS Leader Development Program

More than 200 scholarships of up to \$10,000 will be available for use in the 2027 calendar year.

Places will be available again in 2027 for the MBS Leader Development Program (see page 3 for more information).

Applications must be submitted online via the EMF Grants Hub. The application form will be available from Monday 18 May 2026.

Eligibility

- You are an Epworth employee on a permanent or fixed-term contract (casual staff are not eligible)
- If you are on a fixed-term contract, are contracted until at least **31 December 2027**
- If you have been employed at Epworth for a **minimum of 12 months as at 1 July 2026**
- If you have **not** received a scholarship for use in 2026

Manager support

Before applying, discuss your scholarship idea with your line manager. As part of the assessment process, your manager will provide a written recommendation to the selection committee. They will be able to offer guidance to help strengthen your application and maximise the value of the opportunity for your team and Epworth.

Funding conditions

- Applications should only be submitted **for future activities to occur in 2027**. Applications for past expenses or activities will not be considered.
- All approved funding must be used within the **2027 calendar year**. Reimbursements cannot be claimed after **31 December 2027**.
- Any unclaimed funding will be returned to the Epworth Medical Foundation after this date.
- If you are unable to progress your scholarship activity in 2027, contact the Grants & Scholarships Team as soon as possible. Extensions are only considered in cases of extenuating circumstances or career disruption and require approval.
- Personal technological devices, **such as laptops**, cannot be funded via the scholarship program.
- **Reporting is mandatory and must be completed on time**. Payments will not be made until reporting is up to date. Staff with outstanding reports from previous grants are not eligible for further funding.

Application writing/research assistance

If you would like assistance in writing your application, including researching opportunities, please contact **Knowledge Services** for guidance. Please visit the Knowledge Services page on the intranet [Epworth Knowledge Services catalogue](#).

Conference guidelines

Attending an industry conference is a valuable way to build knowledge, stay current and expand professional networks. When choosing which conference to attend, please ensure that you are choosing an industry led conference, that has been recommended to you by your manager or a colleague.

Avoid for-profit conferences. It is important to note that there are number of for-profit industry conference organisations that are not professional associations. Some examples of these for-profit conferences are: International Conference Alerts, Sigma Nursing, Science Direct, Nurses for Nurses Network. These are examples of conferences that would not be supported by this Scholarship program.

Be aware of potential scams. Please be aware that there are also some SCAM conferences out there. This year, three scams have been identified so far. If you are unsure or would like to check, please contact us and we will assist you.

Tips for choosing an industry run, quality conference.

1. Confirm the conference is reputable: It should be organised by a recognised professional association, peak body, or established industry organisation.

2. Discuss your choice with your manager: Your manager reviews your application as the first step in the assessment process, so it's important to talk with them early to ensure the conference aligns with your development goals and workplace priorities.

3. Consider submitting an abstract: If relevant, you may wish to submit an abstract based on your research, quality improvement activities, or other professional work. Presenting can strengthen both your application and your professional profile.

Undertaking study

When applying to undertake study, it is important that you note you cannot always apply for a **Commonwealth Supported Place (CSP)**. Please contact Dorani Lacey on Dorani.lacey@epworth.org.au to discuss your application before submitting.

Brookes Academy Scholarships

Staff interested in applying to targeted scholarship opportunities to undertake post graduate study are now available to Epworth nurses and midwives in Critical Care, Cancer Care, Perioperative and Midwifery specialties through **Brookes Academy Scholarships**. Refer to the Grants Hub for more information - [Brookes Academy - Epworth HealthCare](#)

If you are interested in applying for the following courses, **DO NOT apply in this general Scholarship round**. Applications to the Brookes Academy Scholarship program will open in **August 2026**. Contact your site Education Manager about applying for these opportunities.

- Graduate Certificate of Intensive Care Nursing – Deakin University
- Graduate Certificate of Cardiac Nursing – Deakin University
- Graduate Certificate of Emergency Nursing - Deakin University
- Graduate Certificate of Perioperative Nursing - Deakin University
- Graduate Certificate of Intraoperative Nursing - Deakin University
- Graduate Certificate of Paranaesthesia Nursing - Deakin University
- Graduate Diploma in Midwifery – La Trobe University
- Graduate Certificate in Cancer Nursing – Monash University

If you want to undertake one of the above listed courses, you need to apply to the **Brookes Academy Scholarships and not the general Scholarships program**.

Melbourne Business School (MBS) Leader Development Program

Leaders will have the opportunity to apply to participate in a 4-day short-course at MBS Carlton campus. In addition to the eligibility requirements for Scholarships, applicants for this program must also meet the full extended criteria below.

- are a leader who is leading a team or in a position of influence
- are in early to mid-career
- live the Epworth values
- want to be a catalyst for positive change
- are committed to continuous improvement

For more information, please view the [program flyer](#).

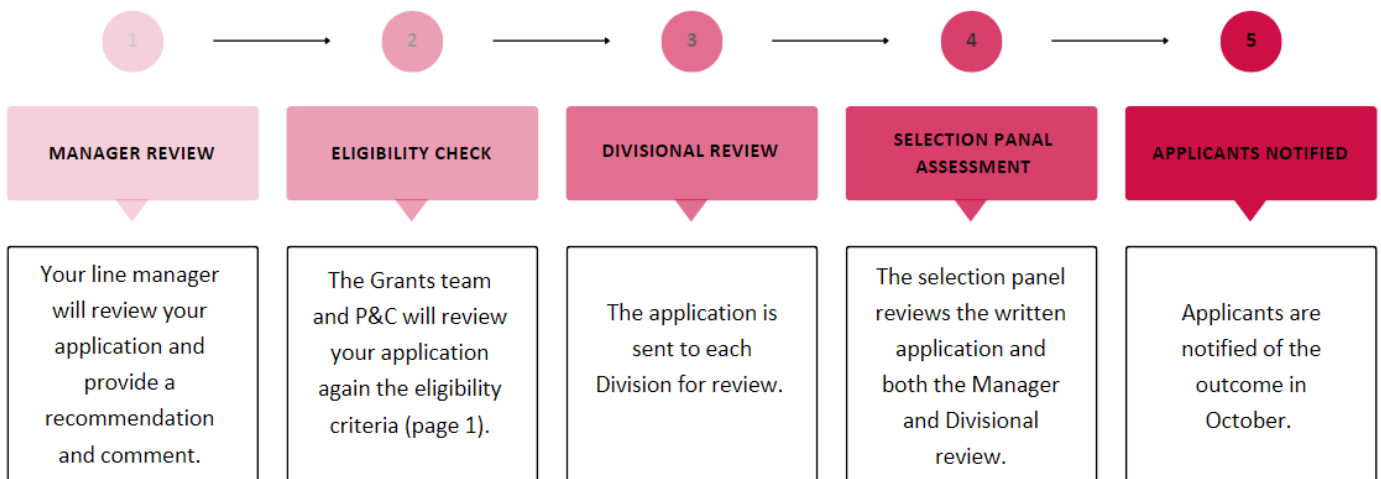
Study Leave and Labour Hours

- Scholarship recipients are entitled to study leave entitlements under their relevant agreement or award, as approved by relevant Divisional processes. Questions regarding study leave can be directed to P&C Assist on peopleandcultureassist@epworth.freshservice.com.
- Funding for labour hours or backfill may be considered for research-based projects or pilot programs.
- Scholarship funding cannot be used for labour hours or backfill related to study, conferences or study tours.

Travel Guidelines

| | |
|----------------------|---|
| Flights | Must be economy, unless you self-fund the difference. |
| Accommodation | Recommend reasonable 3-4 star accommodation. |
| Meals | Meals can be claimed (no alcohol). |
| Transport | All transport directly related to Scholarship activity. |

Selection Process



Award Ceremonies

Award ceremonies are attended by recipients, recipients' managers, members of the Executive, donors and sponsors. Ceremonies will be held in person at Epworth Richmond on the following dates. Recipients will be invited to attend one of the four events.

- Monday 19 October at 2:30pm – 4:30pm 2026
- Tuesday 20 October at 2:30pm – 4:30pm 2026
- Tuesday 27 October at 10:30am – 12:30pm 2026
- Thursday 27 October at 2:30pm – 4:30pm 2026

Reporting

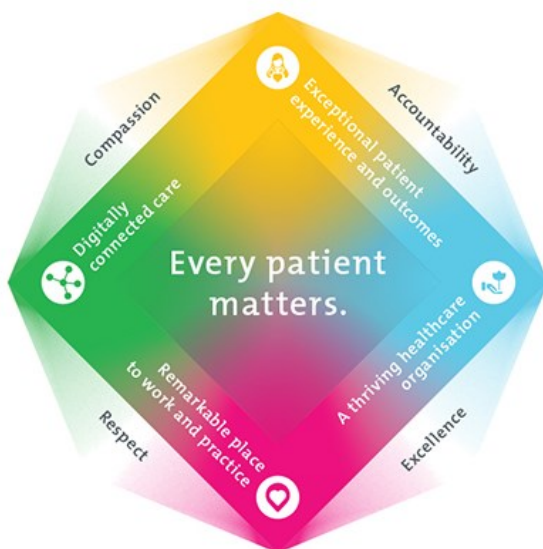
Recipients will be required to submit a thank you card to their donor and 2 reports throughout the year in 2026.

- > Thank you letter or card Due at the award ceremony in October 2026
- > Mid-year report Due 30 June 2027
- > End of year report Due Friday 10 December 2027

Reports are submitted via the EMF Grants Portal which are then shared with donors/sponsors. Recipients are asked to include anecdotal stories, academic results, presentations, or photos to share your experiences with the donor or sponsor. **Not meeting reporting requirements will impact upon the opportunity to continue to access scholarship funding.**

Epworth Strategy

All applications will be required to meet with one or more of the Epworth Strategies listed below. You will be asked to briefly outline how your scholarship aligns with the strategies you have identified.



Exceptional patient experience and outcomes

To empower our patients and deliver compassionate, expert and coordinated care.



A thriving healthcare organisation

To adapt and grow in a changing healthcare landscape by delivering a unique private not-for-profit healthcare organisation.



Remarkable place to work and practice

To ensure Epworth is an outstanding place to work and practice through a culture of care and investment in our people.



Digitally connected care

To innovate and improve the digital experience, interactions and outcomes for our patients, staff and doctors.

Visit Intranet for more information: <https://intranet.epworth.org.au/AboutEpworth/Pages/strategic-plan.aspx>

Application Tips

1. Check you are eligible

Check that you meet the eligibility criteria.

2. Plan your time

Make sure you have enough time to complete your application before the deadline. Keep in mind the application will include a series of questions related to your role and how a scholarship will help you. You will also be asked how your activity **aligns to the Epworth strategy** and will ultimately benefit Epworth.

There won't be any extensions for applications. Applications must be submitted by Friday 19 June 2026.

3. Research and talk to others

Do your research, talk to your manager and peers about your activity and seek their advice as they may have some helpful suggestions for you to improve your application.

4. Strategies to share learnings

Consider the ways you intend to share and embed your learnings from your scholarship and how you might introduce improvement initiatives. This will be an important focus for the selection panels in determining which applications should be invested.

5. Proofread your application

Check that you've answered all the required sections, double-check for spelling and grammatical errors before hitting submit.

6. Get in touch

If you would like to discuss your application or learn more tips, you can direct any questions to:

Grants & Scholarships Team, Epworth Medical Foundation

scholarships@epworth.org.au

03 9426 8170 OR 03 9506 3076